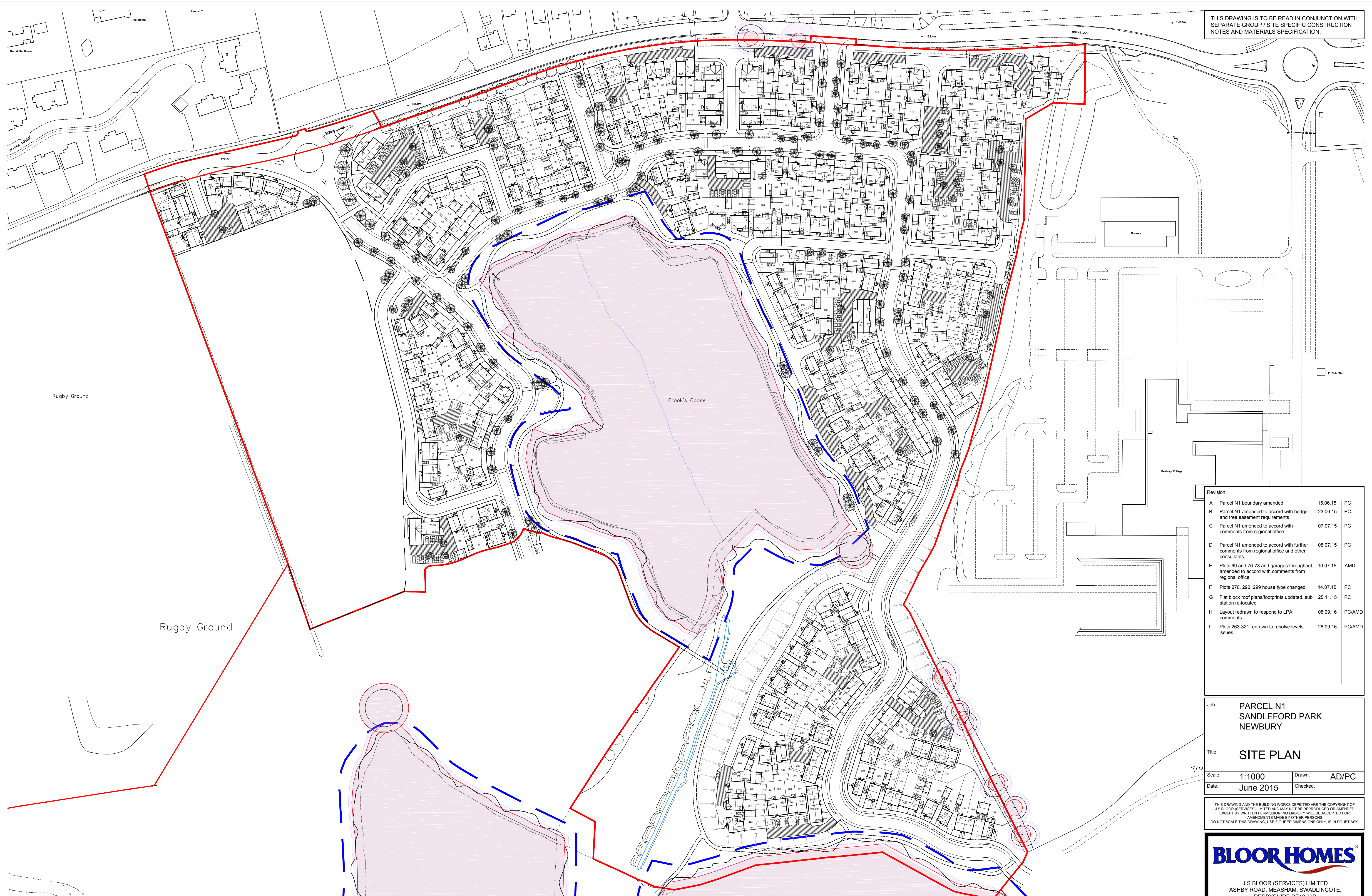


THIS DRAWING IS TO BE READ IN CONJUNCTION WITH SEPARATE GROUP / SITE SPECIFIC CONSTRUCTION NOTES AND MATERIALS SPECIFICATION.



Revision		
A	Parcel N1 boundary amended	15.06.15 PC
B	Parcel N1 amended to accord with hedge and tree easement requirements	23.06.15 PC
C	Parcel N1 amended to accord with comments from regional office	07.07.15 PC
D	Parcel N1 amended to accord with further comments from regional office and other consultants	08.07.15 PC
E	Plots 69 and 76-78 and garages throughout amended to accord with comments from regional office	10.07.15 AMD
F	Plots 270, 290, 299 house type changed.	14.07.15 PC
G	Flat block roof plans/footprints updated, sub station re-located	25.11.15 PC
H	Layout redrawn to respond to LPA comments	08.09.16 PC/AMD
I	Plots 263-321 redrawn to resolve levels issues	28.09.16 PC/AMD

Job: **PARCEL N1 SANDLEFORD PARK NEWBURY**

Title: **SITE PLAN**

Scale: **1:1000** Drawn: **AD/PC**  
Date: **June 2015** Checked:

THIS DRAWING AND THE BUILDING WORKS DEPICTED ARE THE COPYRIGHT OF J.S. BLOOR (SERVICES) LIMITED AND MAY NOT BE REPRODUCED OR AMENDED EXCEPT BY WRITTEN PERMISSION. NO LIABILITY WILL BE ACCEPTED FOR AMENDMENTS MADE BY OTHER PERSONS. DO NOT SCALE THIS DRAWING. USE FIGURED DIMENSIONS ONLY. IF IN DOUBT ASK.

**BLOOR HOMES**

J S BLOOR (SERVICES) LIMITED  
 ASHBY ROAD, MEASHAM, SWADLINCOTE,  
 DERBYSHIRE DE12 7JP  
 TELEPHONE 01530 270100 FACSIMILE 01530 272006

Drawing No. **SOxxx-SL-003i**

# parcel n1 - sandford park, newbury