



# THE BIG **BUZZ** CHALLENGE TOOLKIT



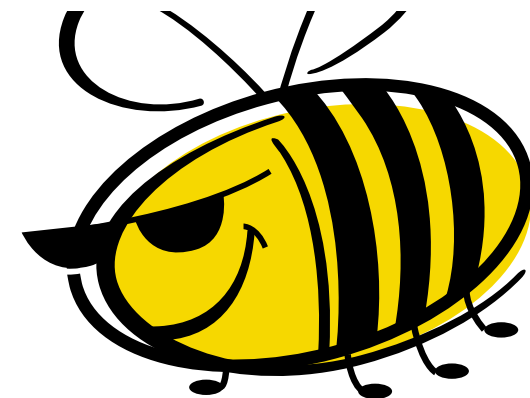
**This guide could not have been developed without the support and enthusiasm of:**

Jo Mann, Kieran Murphy and Rob Ward young people from Newbury, Mo Brickwood Downland Youth Network, Debbie Openshaw Berkshire Association of Clubs for Young People, Denise Buchan West Berkshire Childrens Fund, Mandy Baggaley West Berkshire Children and Young Peoples Partnership, Jenny Hatch West Berkshire Council's User/Carer Development Worker, Sarah Ward Community Action West Berkshire, Su Omerod Community Council for Berkshire, Mark Vernon and Mark Taylor West Berkshire Youth Services, David Danielli Vodafone and Dermot de Courcy Robinson and Barry Souden of MAXX Design.



# CONTENTS

INTRODUCTION	1
THE BIG BUZZ CHALLENGE	2
ABOUT THE BUZZ TOOLKIT	3-4
WHAT WILL YOUNG PEOPLE GET OUT OF TAKING PART?	5
WHAT WILL THE COMMUNITY GET FROM INVOLVING YOUNG PEOPLE?	5
<b>THE BUZZ TOOLKIT</b>	
HANDY HINTS TO REMEMBER	6-7
GETTING STARTED	8
IDEAS FOR CONSULTATION	9-11
CONSULTING WITH CHILDREN AND YOUNG PEOPLE WITH SPECIAL NEEDS	12-18
WHO CAN HELP	19-20
EXAMPLES OF GOOD PRACTICE	21-33
FUNDING YOUR PROJECTS	34-37
FURTHER INFORMATION	38



## INTRODUCTION

Will you be talking to young people as part of your Parish Plan consultation? Does your community listen, support and involve young people in developing their ideas about where they live?

Young people already contribute a great deal to their local communities – through music, sport, volunteering and employment. However, they are also often perceived as responsible for local crime, damage, litter and so on. Many young people have opinions and concerns about where they live and can make a positive contribution to any local initiative if they are given the opportunity. Consulting with young people is the first step.

Sometimes it is about finding the right way to communicate and many adults just don't feel they really know how to reach out to their local young people. They have some ideas – and the commitment – but lack confidence or experience.

**The Big Buzz Challenge** is launched to kick start your parish youth consultation efforts. **The Buzz Toolkit** is here to help you with handy tips and guidance. Read on...and catch the Buzz in your Community!

# THE BIG BUZZ CHALLENGE

In November 2004 Community Action West Berkshire launches **THE BIG BUZZ CHALLENGE**. We are inviting Parishes to work with young people to identify a project that they would like to develop locally.

In 2005 there will be the chance for young people to come and outline how they were involved in their local youth consultation and to present their ideas in as creative a way as possible to a panel of judges. A variety of awards totalling £5,000 will be available to take forward projects. The judges will want to see:

- How young people have been involved
- How the community has supported them
- What techniques they have used (these can be presented through a variety of mediums. e.g. art, presentation, written word, video, music and drama)
- How they have linked with the development of the Parish Plan (if there is one)
- What the outcomes were and what project has emerged.

If you would like further details contact Community Action West Berkshire on **01635 523857** or E mail [sarah.ward@ccberks.org.uk](mailto:sarah.ward@ccberks.org.uk)

# ABOUT THE BUZZ TOOLKIT

**The BUZZ TOOLKIT** is here to help. It contains practical tips and examples to help guide you through consultation projects with young people. It has been compiled by Community Action West Berkshire with support from the West Berkshire Children and Young People's Partnership and sponsorship from Vodafone.

It's aim is to encourage and inspire communities to involve their young people in their Parish Plan or local youth consultation. The toolkit has been produced for Parish Councils, Parish Plan Steering Groups, schools, youth groups, church groups and any member of the community interested in involving young people in community action.

There are some excellent local examples of projects that have involved young people such as the creation of Thatcham Skateboard Park Project and the production of the Downland Youth Network's "Sort it out Video" and these are included in our section on examples of good practice.



## THE BUZZ TOOLKIT INCLUDES

- A. Handy Hints to Remember
- B. Getting Started
- C. Ideas for Consultation
- D. Consulting with children and young people with special needs
- E. Who can help
- F. Examples of good practice
- G. Funding Your Projects
- H. Further information

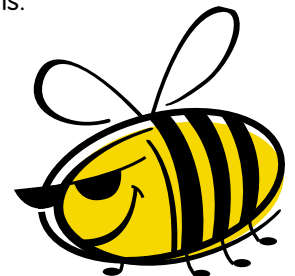


## WHAT WILL YOUNG PEOPLE GET OUT OF TAKING PART?

- A sense of responsibility.
- The ability to work as part of a team and possibly to lead.
- The ability to learn from and to give to others in the community.
- A chance to highlight local issues.
- A chance to develop solutions to problems.

## WHAT WILL THE COMMUNITY GET FROM INVOLVING YOUNG PEOPLE?

- Involvement and ownership by young people of their consultation.
- A true identification of the key local issues for young people.
- Better understanding between generations.
- Fresh, new, innovative ideas.
- Energy and enthusiasm.



## A. HANDY HINTS TO REMEMBER

- Firstly contact the Parish Planning Development Worker at Community Action West Berkshire on **01635 523857** who will help you take forward the youth consultation.
- Listen to young people, respect their views and their confidentiality and keep an open mind.
- It takes time to build trust and relationships with young people.
- Remember to involve all young people including young carers, those with special needs, young people excluded from school, traveller children. Some of the organisations listed in the toolkit may be able to help. Ask young people to identify who is missing.
- Involve young people in the process from the very beginning and encourage them to design ground rules and agree roles and responsibilities.
- Make sure young people know why they have been invited to take part and support them in having responsibility for the work.
- When consulting with young people separately from their parents or respected carers, use common sense child protection measures to keep young people safe and protect adults involved. Appropriate police checks on adults supporting the consultation should be taken. For further information contact Jenny Hatch User/Carer Development Officer on **01635 519406**.
- Make sure adults meet with young people in groups, that young people know who is responsible for the consultation and that the personal contact details for young people are kept to a minimum and only used when necessary.

- Remember to get written consent from young people before taking and using photos/film and parental consent for those under 18 years of age.
- Ask young people where they would like to meet. This might be in the recreation ground or out on the street and at what time they would prefer, ensure meeting places are not intimidating.
- Consider where young people live and provide transport for those living in outlying areas.
- Reimburse any expenses incurred.
- Design activities that suit the age range.
- Offer incentives and have refreshments at consultation events.
- Make sure adults don't take over the consultation.
- Use a range of techniques designed for different age groups and ability. Make them varied, fun and colourful.
- Use creative, attractive, low cost, non-threatening ways for young people to present their views and ideas to the local community and decision makers. Support might be needed in doing this.
- Tell young people the results of the consultation and what will happen next. Involve them in designing the action plan resulting from their consultation.
- Evaluate your consultation so other adults can learn from your experience.



## B. GETTING STARTED

- Identify a key person on your steering group to support the youth consultation, that person should enjoy young people and be enthusiastic about the process.
- Contact Community Action for Berkshire for support in identifying a key focus group of young people.
- Organise a get together with a focus group of young people in a place they feel comfortable with and talk to them about where they live and what they like and dislike. Listen to their comments.
- Get them to map where other young people live and generate some ideas as to how they could be involved.
- Build up a list of skills in the group and roles and responsibilities.
- Decide on a range of fun techniques to use.
- Activities should not take too long in order to reduce boredom.
- Identify what additional support the Parish Planning Steering Group can give and decide how to keep them informed of progress.
- Develop the consultation plan and follow through.
- Young people present their ideas to those who can make a difference.
- Make sure that the steering group involve young people in developing their suggested projects, so that the projects have more chance of succeeding.

## C. IDEAS FOR CONSULTATION

**The ideas listed below may seem a little daunting but they are just to get you started. Young people will inevitably come up with their own ideas. Above all make sure they are fun.**

**Maps and Dots** – This exercise can be used in a variety of ways. e.g. place a dot where you live – where you play – important places.

**Planning for Real Model Building** – Build a model of the community and use it to gather key issues and generate discussion, to identify what young people like and what they dislike and their ideas for the future.

**Parish Walkabouts** – Encourage children to talk about what they see, smell, touch, taste and hear on the walk. For example comments on traffic, litter, noise and amenities could be noted. This could be an activity within schools.

**Photography Project** – Give disposable cameras to young people aged 11-18 asking them to take photographs of the area – their favourite and worst places and examples of ideas they would like to see developed locally.

**Topical photographs** to stimulate discussion. e.g. playgrounds, dark alleys, litter, road parking, a local shop.

**Graffiti boards** allow young people to write freely about how they see their community or how they feel it sees them, what they would change and to identify obstacles and solutions.

**Video diary** to gather impressions of the community (young people can make their own video diaries at a pre-arranged workshop).



**Email and website** interactive notice board

**Text messaging** – Design a mobile phone number for young people to text with views.

**Workshop** to determine key issues and then discussion groups to look at identified issues e.g. environment, transport, leisure activities etc. (Use colour and graphics to generate interest e.g. post-its and good ideas boxes)

**Street discussions** and information gathering.

**Questionnaires** designed by young people.

**Use of creative mediums – There may be people living in your community who are creative and would like to get involved in supporting the young people to:**

**Make a short video** about their community's possible link between generations. There are arts organisations that can offer support. e.g. Real Time Video.

**Write a short play, sketch** about the good and bad aspects of life in the community.

**Use music/singing workshop.**

**Writing and poetry competitions.**

**Art/Collage work** with schools, youth groups and out on the streets.

**Games and sport activities** using basketball hoops, goals or objects that can be moved to indicate opinions.

**Disagree and Agree Running Games** – One side of the room is the agree side and the other indicates disagree. Ask the children questions and ask them to run to the side that they favour. Start with silly, fun statements and gradually include statements that relate to the consultation, e.g. There is nowhere to play ball games. Agree or disagree?

**Group polling** – Ask questions and ask them to vote using coloured cards in order of importance or stand on an agree/disagree chart to indicate views.

**Finally utilise the school councils and youth groups** to develop any action plan or project.



## D. CONSULTING WITH CHILDREN AND YOUNG PEOPLE WITH SPECIAL NEEDS

You may have young people in your community who have special needs, perhaps they are hard of hearing, have a visual impairment or a disability.

**They should have the same rights as any other child/young person. Without equal access to the opportunities or the services they need, they cannot make real choices about their lives or their involvement in their community.**

**Consultation about community issues should always include children and young people with special needs – they will enjoy and appreciate being involved and will be empowered by their experience.**

Perhaps the schools attended by the children/young people might help you with your consultation...they will know the strategies that will help you communicate with them individually if this is what you want to do.

The schools themselves might like to run a topic over a number of weeks about 'your local community' and they could feedback the views of those children in your particular area.



Here is a list of special schools and special needs resourced mainstream schools:

- The Castle
- Brookfields
- Denefield
- Kennet
- Park House
- Trinity
- Lambourn
- Robert Sandilands
- Speenhamland
- Westwood Farm Infants
- Winchcombe Infants
- Theale
- Winchcombe Juniors



If however you wish to carry out any consultation yourselves we have made some suggestions which we hope you find helpful.

### The Consultation

First of all – what do you want to find out? What do you need to know? Decide exactly what it is you are hoping to achieve from this consultation.

When consulting with a child/young person with a disability, a process of communication is needed (i.e. using a variety of different forms of communication with the young person or group). Also, it is good to create a situation where the young person has had time and support to think about the subject so they are able to fully participate.

## Key things to help you if dealing with a young person with a disability on a one-to-one basis

Discover what level of participation in decision-making can be expected from the individual. e.g. whether the young person is:

- Likely to make an active contribution to the discussion (e.g. knows what he/she wants and understands something of the situation) either directly or through their carer.
- Likely to participate in a limited way (e.g. can indicate preferences when shown pictures of people and places) perhaps responding to some things, with their carer being the main source of information.
- Likely to watch from the sidelines without appearing to make a direct contribution.
- Likely to get upset or withdraw.

Ask the child/young person's carer or those closest to them how they communicate and what you can do to make it easier for them, bearing in mind any sensory impairments they may have, e.g. visual impairment, hearing loss or physical disability.

Ascertain whether medical factors are likely to affect the discussion.



From talking to those closest to the child/young person, note all the ways in which the person communicates, e.g. do they:

- Use speech.
- Use sign.
- Use communication aids, books etc.

Then decide what process of consultation will enable the child/young person to make their preferences clear and give them the opportunity to express their thoughts and ideas.

In your consultation:

- Use easy, short, familiar words and short sentences.
- Use words with one meaning... e.g. cars and buses rather than transport. Avoid saying things like 'in the pipeline'.
- Do not use jargon or hard words – if you need to use a difficult word explain carefully what you mean.
- Do not give too much information all at once, in fact break down the information.
- Speak in a clear and relaxed manner.
- Do not use abbreviations.
- Use closed questions and list important things or options. If there are key areas of discussion, list them and then spend time finding out what the young person thinks.

**Above all be direct, clear,  
take your time and HAVE FUN!**

## Pictures

Often it is helpful to use pictures to help explain an idea – abstract concepts or things that have not happened yet are very difficult to understand...

So, if those closest to the young person tell you that pictures enable them to express themselves:

- Have a pouch containing pictures of the possible answers to the questions you are asking.
- Make sure that pictures help to explain what you mean.
- Make sure pictures are big enough.
- Choose a picture to mean something then keep using the same picture.
- Use everyday pictures like signs in buildings or on roads.
- Do not use too much colour or detail, as this can make them hard to see.

N.B. Clip Art is helpful. Also, pictures from Change Picture Bank ([www.changepeople.co.uk](http://www.changepeople.co.uk)) are good to use with people with a disability and those who are visually impaired.



## Other ideas:

- Use photographs to show real things.
- Use symbols if you know that people can't see very well – symbols are easier to see than drawings.
- Logos, standing for companies, charities or other organisations, are also helpful. Try [www.google.com](http://www.google.com) image search.

## Some tips:

If possible, tell the young person or group what is going to happen in advance. Give them as much background information as possible and give them and/or their carers a copy of any questions or topics that you would like them to think about.

When dealing with both individuals and groups, make the consultation fun, colourful and energetic – even think about taking a bag of goodies to break the ice.

You could make the consultation experiential – i.e. actually take the young people to the place where a playground could be built.

Question responses and dig deeper if it seems appropriate, e.g. what kind of playground, where, how will they use it, what else do they like doing? Is there anything else that makes them happy or sad? What do they do at the moment?

Show that you understand the views and aspirations of the young people – these are valid and real to them and can reveal a wealth of information. e.g. someone who wants to be a famous actor, could be interested in a drama club, youth club etc.

## Above all, remember that...

A consultation strategy is really a communication strategy

At the end of the consultation, make sure the children/young people understand the conclusions you have come to and that you understand what their wishes and needs are. And give feedback – they will want to know what happens!

If you need any help or would like to ask for advice, please ring Jenny Hatch, User/Carer Development Officer on **01635 519406**



## E. WHO CAN HELP

There are many organisations that can offer you support. In the first instance contact **Community Action West Berkshire** who hold contact details and will advise you on what support is available and who to contact.

Here are a few examples of help available.

**West Berkshire Council Culture and Youth Service** may be able to help Parishes reach some hard to reach young people.

**Berkshire Association of Clubs for Young People** support many clubs and young people across Berkshire. Their Millennium Volunteer Scheme may be able to place a young volunteer to support your consultation.

**The Downland Youth Network** are already working with young people in the Downland area and would be interested to support any Downland Parishes.

**The Duke of Edinburgh Award Scheme** are working with young people across West Berkshire and young people can have their youth consultation accredited to any of the award schemes. D of E can also help in finding young people who can help. An "opportunities for participants" newsheet is produced regularly and any requests for young people to become involved could be included.

**Connexions** offers information, advice, guidance and support to young people aged 13-19 years to help them plan their future and move into adult life.

**Real Time Video** may be able to help with the production of a video. They can train young people in developing their skills with the video camera, lighting and audio equipment. How to compose background music, editing and how to present their final video.



**West Berkshire Council User/Carer Development Worker** can support your community in involving any young people with a disability. A good place to start is the young person's parent or carer. They will know how best to consult with that young person. The school the young person attends may also be able to help you with your consultation.

**PALS** encourages young disabled people in taking part in leisure activities.

**The Edge Young People's Drug and Alcohol Service for West Berkshire** provide an accessible, non-judgemental and confidential service for young people who have issues concerning drugs and alcohol.

**The West Berkshire Children and Young Peoples Partnership** has a wide range of organisations that work with young people and they may be able to help take forward some of the action points highlighted in your consultation.

**The ARFA bus** is a mobile youth resource based in Hungerford and has already been used at consultation events. It is equipped with a range of computers that provide internet access and games and could be adapted to suit your needs. Theale Youth Centre also houses a mobile youth resource.

**Both primary and secondary schools** may be able to help, an approach through the governing body might also be useful. Make sure you give good lead in time to plan any events.

**The Children's Fund** may be able to offer guidance on funding and making applications plus other youth projects across the UK.

## F. EXAMPLES OF GOOD PRACTICE



# PURLEY MODEL PROJECT

I don't like the cars going too fast – **SLOW DOWN**  
The Rec is not always safe because of the druggies  
Need a skateboard park

## WHO WAS INVOLVED:

Young people aged 3-18, Purley Beaver Group, Purley Parish Planning Group, Community Action West Berkshire Parish Planning Worker.

## COST:

£400 funded by The Children's Fund and Vodafone.

## TIMING:

April – September 2004

## HOW WERE YOUNG PEOPLE INVOLVED?

Children from the local Beaver group aged 7-8 made a model of their community over 2 evenings. An initial discussion with the children prior to using the model encouraged them to make realistic suggestions. They were then asked to indicate what they liked and disliked about the area they lived in and their ideas for the future. All this information was collated by the Parish Planning Group Representative. The same exercise was repeated in the local primary school and a workshop for older teenagers.

## HOW AND WHO SUPPORTED THE YOUNG PEOPLE?

The Purley Parish Planning Group representative worked with the young people throughout the project and she was supported by CAWB. The West Berkshire Youth Service assisted in finding young people to attend the young people's workshop.

## TECHNIQUES USED:

Discussion and model building.

## OUTCOME:

A range of ideas to incorporate into the Parish Plan.  
Further work will be carried out to involve young people in the action planning stage.



# THATCHAM SKATEBOARD PARK PROJECT

Need a skateboard park

## WHO WAS INVOLVED:

Local young people, West Berkshire Council's Recreation Development Worker, Thatcham Town Council, local businesses.

## COST:

£30,000

## TIMING:

2.5 years

## HOW WERE YOUNG PEOPLE INVOLVED?

A 12 year old boy collected a petition signed by other young people and presented it to Thatcham Town Council in November 2001. 16 young people aged 11-20 who all used skateboards, BMX's and inline skates formed a committee following an open meeting and with the support of WBC Recreation Development Worker paid visits to other skateboard projects and met with other young people, council members and manufacturers to get an idea of what Thatcham required, suitable sites, designs and funding needed.

Young people wrote to major companies in the area to raise funds and held a rock concert at the local senior school which generated £500 for the project.

Young people kept the wider community informed of progress by holding an open meeting to answer questions.

## HOW AND WHO SUPPORTED THE YOUNG PEOPLE?

WBC Recreation Development Worker organised the first consultation meeting and supported a committee of young people throughout the process. Assisted in some of the major funding applications.

## TECHNIQUES USED:

Petitions, open events, rock concerts, visits to projects.

## OUTCOME:

Phase 1 of the skateboard park opened in January 2004. Phase 2 was completed September 2004. Young people have acquired a range of new skills. Young people have gained the respect of the local community.



Photos: Mark Taylor  
(West Berkshire Council  
Culture and Youth Service)

# RURAL ROADSHOW PILOT YOUTH CONSULTATION

Hearing the cuckoo, I like the rivers and shops and parks in Kintbury, friends, if we had street lighting mum would let me go out. Rec-not always safe, bus shelter is sooo dirty!!! What is there 4 teens

## **WHO WAS INVOLVED:**

60 young people aged 2-18 years of age. Community Council for Berkshire, West Berkshire Children and Young Peoples Partnership, ARFA mobile youth resource, artists.

## **COST:**

£500 funded by the West Berkshire Children and Young Peoples Partnership.

## **TIMING:**

One month.

## **HOW WERE YOUNG PEOPLE INVOLVED?**

CCB facilitated the youth consultation as part of a wider West Berkshire rural road show "Our Village – Our Community". The ARFA bus was utilised as a focal point for the consultation to give young people the opportunity to communicate the issues which were important to them. The consultation took place in 4 West Berkshire communities. It was decided to use a creative medium to carry out the consultation.

Young people were asked?

What is good about where you live?

What would you change?

Their answers were fed back by creating a number of colourful collages.

## **HOW AND WHO SUPPORTED THE YOUNG PEOPLE?**

The artists working on the project gave encouragement and provided the resources to take the project forward. Some parents stayed and helped.

## **TECHNIQUES USED:**

Art collages and discussion.

## **OUTCOME:**

Young people valued being asked, being listened to and being involved in something positive. Their thoughts were fed back to the West Berkshire Children and Young Peoples Partnership.



# PURLEY PHOTOGRAPHIC PROJECT

We need a bridge over the river so we can visit our friends.

Can meet your mates in the park.

Lane to Pangbourne needs more lighting.

## WHO WAS INVOLVED:

Young people, members of the Parish Planning Group.

## COST:

6 disposable cameras and development of films approx. £50

## TIMING:

One month.

## HOW WERE YOUNG PEOPLE INVOLVED?

A youth drop-in event was staged with food and music as part of Purley's Parish Plan youth consultation. Six young people agreed to take part in the project. They met with several members of the Parish Plan Steering Group and were asked for their ideas on how to take forward the project. They agreed to take photos of things they liked and disliked in their local community. The photos were then developed and the young people came to discuss the photos. Some good ideas were generated and they were incorporated into the Parish Plan Action Plan.

## HOW AND WHO SUPPORTED THE YOUNG PEOPLE?

The Parish Plan Working Group met with the young people on a number of occasions throughout the project.

## TECHNIQUES USED:

Photography and walkabouts.

## OUTCOME:

A scrap book of photos.

Incorporation of ideas into the Parish Plan Action Plan.



# DOWNLAND YOUTH NETWORK 'SORT IT OUT' – VIDEO PROJECT

In response to concerns in West Berkshire Downland Villages that young people had little to occupy them together with residents' perceptions about risk of crime. The Downland Youth Network, which is a voluntary group of village people with concerns about young people, obtained funding to undertake the video consultation.

## WHO WAS INVOLVED:

30 Young people aged 8 –24 from a selection of Youth Clubs and villages.  
Members of the Downland Youth Network Steering Group.  
Members of Chieveley Youth Council.  
Staff from the Youth Offending Team.  
Community Council for Berkshire.  
Realtime Video.

## COST:

£4,500 Funded by Global Grants, Berkshire Community Trust, The Countryside Agency, The Children's Fund and Vodafone.

## TIMING:

October 2002 – March 2003.

## HOW WERE YOUNG PEOPLE INVOLVED?

A group of eight young people recruited through youth clubs, Chieveley Youth Council and the Youth Offending team worked with Realtime Video from Reading. They developed a programme, prepared and undertook interviews with other young people, learned all aspects of using the equipment, filmed both interviews and local villages scenes, composed the music for the video, did the editing and presented the video to a meeting of service providers, Parish Councillors and funders at the Downs School in April 2004.

## HOW AND WHO SUPPORTED THE YOUNG PEOPLE?

The Downland Youth Network members facilitated meetings and refreshments, Real Time Video trained the young people in developing skills with the equipment. The Youth Offending Team staff supported two young people to be involved in the project.

## TECHNIQUES USED:

Team building; leadership skills; interview techniques; use of camera and audio equipment; use of lighting equipment; development of musical background; film editing; design of cover; presentation skills.

## OUTCOME:

Better understanding of what it is like for young people living in the countryside resulting in the Downland Youth Network development of three projects:

1. A DYN Youth Development Worker for the Downlands funded by LNF.
2. The Outrider Pilot Transport Scheme funded by the Countryside Agency (see case study).
3. The Wazupwestberks Website – supported by Vodafone.



# OUTRIDER – YOUTH TRANSPORT SCHEME

Following extensive consultation by the Downland Youth Network at the Downs School with young people about issues and problems that they felt Transport was identified as a major problem.

## **WHO WAS INVOLVED:**

60 Young people aged 15 – 17 living in the Downland villages.  
Members of the Downland Youth Network Steering Group.  
Community Council for Berkshire.  
West Berkshire Local Strategic Partnership.

## **COST:**

£4,000. Funded by the West Berkshire Local Strategic Partnership and the Countryside Agency through the West Berkshire Rural Transport Partnership.

## **TIMING:**

October 2004 – March 2005.

## **HOW WERE YOUNG PEOPLE INVOLVED?**

Young people were involved in the project starting with wide involvement in identifying transport as an issue. As the project developed, The Downs School Youth Council were involved in developing the scheme to ensure that it would meet the needs of young people and that they could also ensure that those participating really understood how the scheme would work. Finally 60 young people have been issued with Travel Tickets and are responsible for using them and recording their journeys for the duration of the pilot.

## **HOW AND WHO SUPPORTED THE YOUNG PEOPLE?**

The Downland Youth Network members and the Rural Transport Partnership Manager supported the scheme by securing the funding and providing the administration for the meetings.

## **TECHNIQUES USED:**

Leadership Skills, meeting facilitation skills, independent travel, journey planning.

## **OUTCOME:**

A solid evidence base which will be used as evidence to value the importance of Transport for young people.  
Provision of travel tickets to young people to meet a need they identified.



## E. FUNDING YOUR PROJECTS

Community Action West Berkshire can advise on up-to-date grants available for youth consultation and projects, contact **01635 523857**



### The Local Network Fund

The Local Network Fund for Children and Young People provide grants to small community groups supporting young people aged 0-19 years (or up to 25 years for learning disabled). Grants between £250-£7,000 are available for projects that give children and young people a chance to influence matters that concern them.

For further details contact **0118 930 3021** or email: **Infadmin.bcf@patrol.i-way.co.uk**



### Greenham Common Trust Ltd.

The Trust awards grants annually to organisations and projects in West Berkshire and North Hampshire and has two categories of awards:

Standard Grants - up to £9,999

Major Grants - £10,000 and over

Final decisions on applications are made by the Trust's Distribution Committee, with recommendations on grants of £2,000 and under made by the Youth Distribution Committee, which is made up from young people selected from local schools.

Application deadlines – December of each year.

Application packs from **www.greenham-common-trust.co.uk** or **01635 817 444**



### Awards for All

Grants of between £500-£5,000. Grants can fund events, activities, training and development, pilot projects, publicity materials, transport costs, professional fees and volunteer expenses.

Further details contact: **01483 462 943**

Application packs from **0845 600 2040** or visit: **www.awardsforall.org.uk**



### Big Lottery Funding

Provides grants to individuals or small groups of young people who want to develop their own ideas and be involved from start to finish. The Young People's Fund puts young people at the centre of creating, planning and delivering projects that will achieve five main outcomes:

Being healthy, staying safe, enjoying and achieving, making a positive contribution to the community and economic well-being.

Grants will be available from Summer 2005 and range from £500-£5,000.

Further details contact: **0845 410 2030** or visit: **www.biglotteryfund.org.uk/programmes/ypf**



### 2-TEN FM kids Appeal Fund

The aim of the 2-TEN FM Kids Appeal Fund is to inspire the minds of local children, to give them a brighter future. It funds projects and resources that give children and young people the opportunity to:

- Take part in activities that they may not otherwise have the opportunity to participate in.
- Undertake experiences that will develop them as a person and inspire them to achieve their full potential.

Grants of up to £1,000 are available twice a year with application deadlines of 15th March and 15th September each year.

For further details contact, the 2-TEN FM Kids Grants Administrator on **01635 279900**



### Grantnet

West Berkshire Council subscribes to the Grantnet Service – the UK's leading free-to-use computerised grants database. It can identify funding streams that may be available to community groups for specific projects. The system is free to use and can be accessed via the Council's home page [www.westberks.gov.uk](http://www.westberks.gov.uk). Register your organisation and use a password you will receive by email to gain access. Then complete the questionnaire and Grantnet will give you an overview of the funding schemes that could apply to your project. The Partnerships Team at Market Street will be able to offer further information.

Tel: **01635 519185**



### Don't forget THE BIG BUZZ CHALLENGE

£5,000 of prizes available for projects that young people have highlighted through their consultation.

Application deadline by 31st March 2005.

Contact Community Action West Berkshire for details on **01635 523 857**

email: [sarah.ward@ccberks.org.uk](mailto:sarah.ward@ccberks.org.uk)

or visit [www.ccberks.org.uk](http://www.ccberks.org.uk) for further details.

## H. FURTHER INFORMATION

Williams J.(2000) **Think country child! The Councillors Guide to Planning Services for Children and Young People in Rural Areas**  
NCVCCO, CA, LGA, London

### Rural Youth Network

Rural Youth Network national organisation that represents work with young people in rural areas.

Tel: **0116 242 7441**  
email: [ruralyouth@nya.org.uk](mailto:ruralyouth@nya.org.uk)  
[www.ruralyouth.com](http://www.ruralyouth.com)

### Save the Children

Save the Children has created a practical guide to consulting with children and young people on policy issues. It contains advice that is likely to be useful for other consultation scenarios. You can download the guide from:  
[www.savethechildren.org.uk/temp/scuk/cache/cmsattach/960\\_reactiontoolkit.pdf](http://www.savethechildren.org.uk/temp/scuk/cache/cmsattach/960_reactiontoolkit.pdf)

### Youth Information Toolkit

Youth Information.com is The National Youth Agency's Information toolkit for young people and those working with them. It is linked with more than 200 organisations including youth service projects, Connexions and government departments. For more information, visit the site at [www.youthinformation.com](http://www.youthinformation.com)

### Mencap's Listen Up Pack

Mencap's Listen Up Pack includes a video that shows how young people with special needs can voice their opinions.

To borrow a copy contact Mencap **01635 41464**  
[www.goashford.com](http://www.goashford.com)

Click youth and then working with young people pack.



Contact Community Action West Berkshire  
for details on **01635 523 857**  
email: [sarah.ward@ccberks.org.uk](mailto:sarah.ward@ccberks.org.uk)  
or visit [www.ccberks.org.uk](http://www.ccberks.org.uk) for further details.